

COLING 2016

Additional Information for Participants

Wi-Fi Information

| SSID | Password |
|------------|------------------|
| COLING2016 | BaobabTaskDotCom |

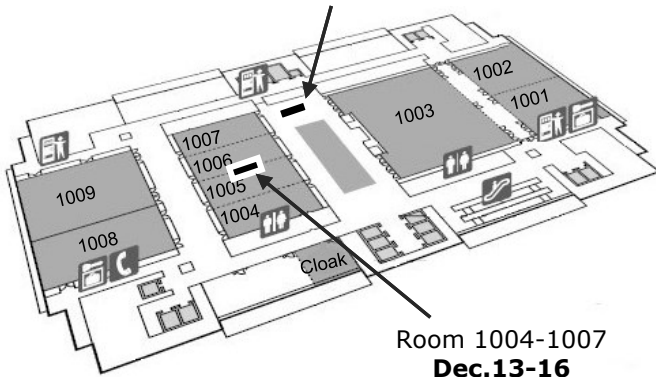
*Please note, the password is **case-sensitive**.
Be sure to distinguish upper- and lowercase letters

Refreshment Stand

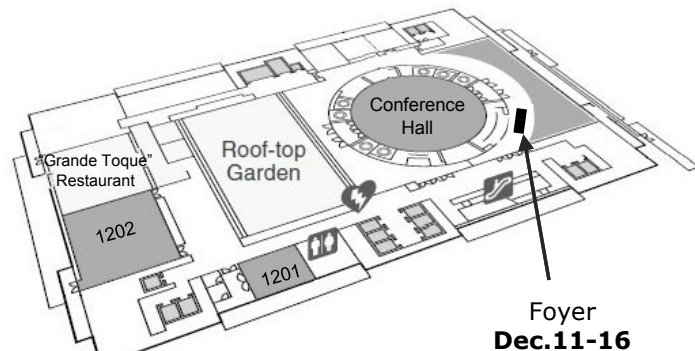
Please help yourselves to the refreshments during the conference which will be freely available to all participants at below sites.

10F

Next to Registration
Dec.11-16



12F



Conference Hall **Remarks, etc.**

“Grande Toque” Restaurant

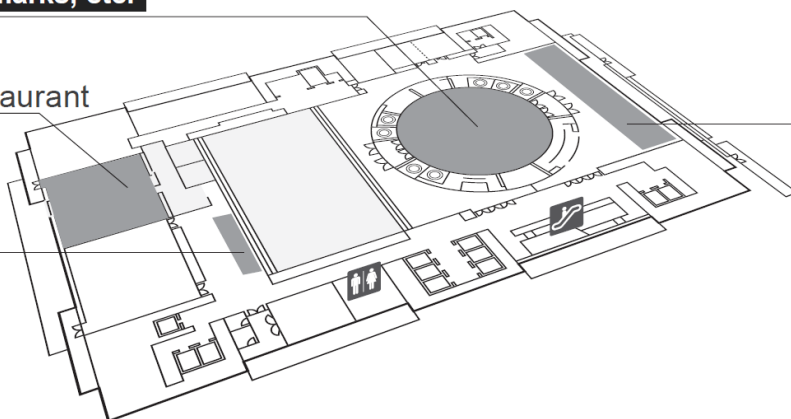
Drink & Food

Foyer

Drink & Food

Lobby

Drink



*Remarks and Short Talk by the sponsors etc. will be given on the stage located in the Conference Hall

*We expect a very large turnout and Conference Hall may be crowded. Please see other venues available on the above map

*Cloak is located on the 10th Floor

*Please note the following;

- The welcome reception is only for those who registered for the Main Conference. It does NOT include those who registered only for the Workshops and Tutorials.
- Those of you who did not register for the Main Conference, and still wish to attend may purchase a ticket to do so. It will be sold at the 10F General Information starting Dec. 11. Tickets are ¥2,000 per person, and we accept **only cash (JPY)**.
- Due to limited number of tickets, it will be a first-come first-served system.

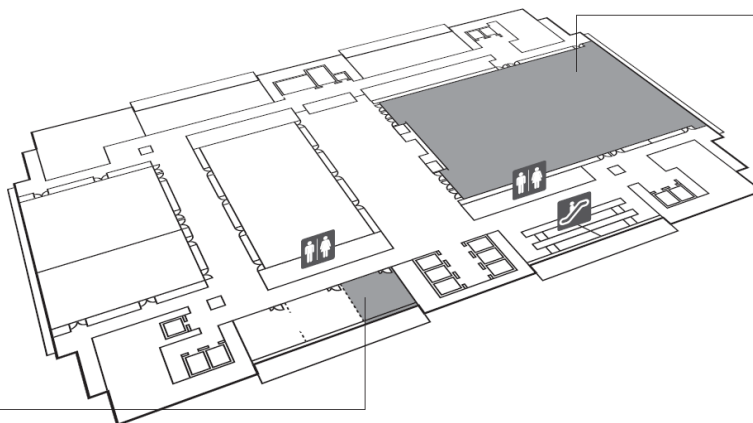
Banquet (10F Room1001-1003)

December 14, 18:00~20:30

Room 1001-1003

Drink & Food

Cloak

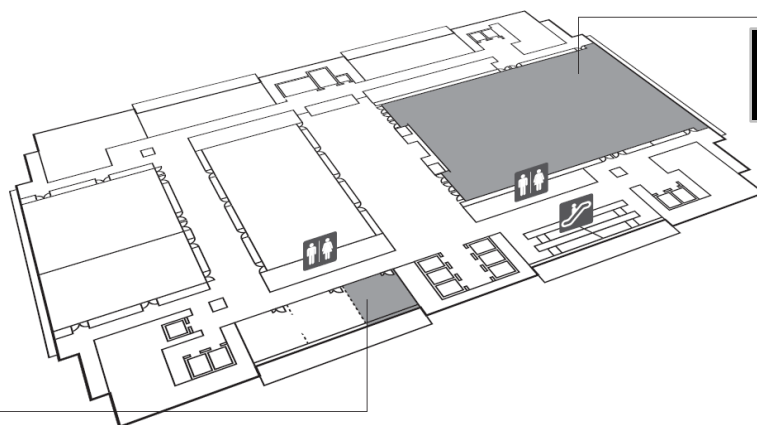


* Please be informed, the starting time may change (moved up or delayed) due to Excursion situation.

*Please note the following;

- The banquet is only for those who registered for the Main Conference. It does NOT include those who registered only for the Workshops and Tutorials.
- Those of you who did not register for the Main Conference, and still wish to attend may purchase a ticket to do so. It will be sold at the 10F General Information starting Dec. 11. Tickets are ¥5,000 per person, and we accept **only cash (JPY)**.
- Due to limited number of tickets, it will be a first-come first-served system.

Room 1001-1003

Meeting Place
Dec14, 12:00


Cloak

Excursion Participation

Please note the excursion is only for those who pre-registered in advance for the Main Conference and the excursion. It does NOT include those who registered only for the Workshops and Tutorials.

As we've had a very large number of registrations and due to limited seating on the bus, we can only accommodate invited speakers, those who pre-registered for excursion participation and a few accompanying persons (*1).

If you were unable to obtain tickets, there may still be some cancellation on the day of the excursion, so if you wish to standby and wait for a cancellation, please come to Room 1001-1003.

We will begin to take names for the waiting list at 11:30.

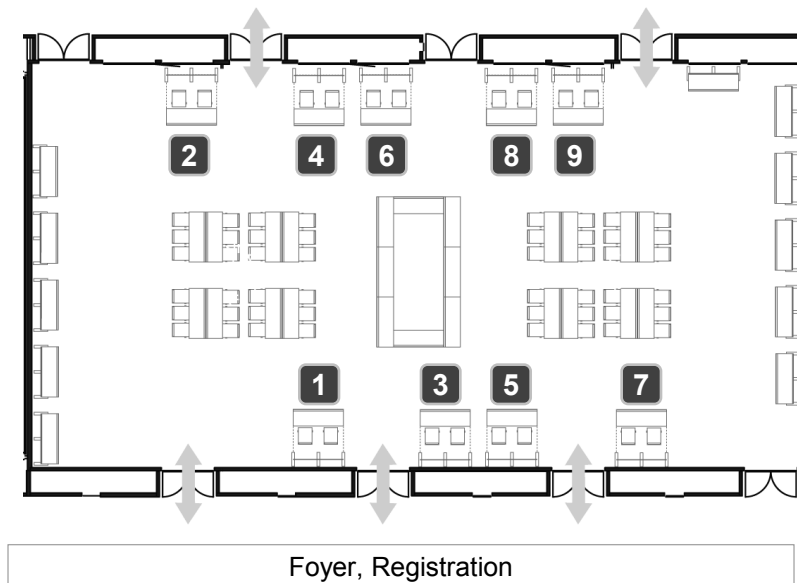
*1. Accompanying persons who were unable to register for the excursion due to registration format, may purchase a ticket to participate. It will be sold at the 10F General Information starting **Dec. 11**. Tickets are **¥5,000** per person, and we accept **only cash (JPY)**.

Again, due to limited number of tickets, it will be a first-come first-served system.

Departure Schedule and Reminder

Those of you participating in the Excursion, please note the following;

- Please come to Room 1001-1003 after the morning session.
- Our staff will escort you to the bus (1F Plaza).
- We will hand out your lunch on the 1F before you aboard the bus.
 - *Lunches for vegetarians and those of you with allergies are available at the 1F counter.
- Details of the tour will be given by the tour guide on the bus.
- There will be 19 busses in total. If your group wish to aboard the same bus, we ask you to assemble in Room 1001-1003 and go down to 1F together in a group.
- Be sure to pick up your belongings at the cloak before going to the excursion.
- We will walk about 10-15mins from the bus to the sites in Nara. You are asked to prepare your own rain gear in case of rain.
- Busses are not equipped with bathroom facilities.



1. TOPPAN PRINTING CO., LTD.

Tabido is an activity conducted by Toppan along with a variety of cooperating businesses and organizations with the goal of creating a Japan that makes tourists want to come back to visit again and again. Leveraging the company's strength in content creation and communication ability, Tabido provides inbound solutions that are ideal for drawing out the unique charm and appeal of each region to their maximum potential.

2. Baidu Inc.

Baidu Natural Language Processing group focuses on the research and development of technologies analyzing natural language to understand users' requests and generating natural language to express given intents and thoughts. Please enjoy the latest technologies of Baidu in search engine, deep-QA, Machine Translation and Poetry Generation.

3. TOIN Corporation

TOIN is a translation service provider and has been working with machine translation system, starting with the Mu project, requested by Professor Makoto Nagao, a former-president of Kyoto University. Today, we demonstrate practical practices that TOIN has been evaluating in business perspective.

4. IBM Research

Meet 17 IBM researchers and engineers from 7 laboratories around the world at the IBM booth! Please feel free to ask any questions regarding our publications and job opportunities. Take a close look of our demonstration on our product, Watson Knowledge Studio, which applies NLP and machine learning techniques to address real world problems, with a user-friendly interface for annotation.

5. Tencent

Hosted by the Joint Lab between Tencent and HIT (Harbin Institute of Technology), it'll show the lab's latest progress on Sentiment Analysis and Conversational Robot. Welcome to drop by and communicate with researchers from Tencent AI Lab and students from Research Center for Social Computing and Information Retrieval of HIT.

6. Microsoft Development Co., Ltd.

Rinna, a Japanese high school girl AI with 4.8 million followers on Line and Twitter, is waiting for you at the Microsoft booth! Please come by and chat with her. Microsoft has a lot of exciting products including Surface, Xbox, Windows, Office365, Cortana and Bing. If you are interested, please stop by and chat with us!

7. KDDI Research, Inc.

A brief overview of our recent research and development activities and position offer information are presented at KDDI Research, Inc. booth.

8. Gunosy Inc.

Our mission is "Optimally deliver information to people around the world". We aggregate and deliver data, such as news articles and videos, based on users' interests. At the exhibition, we introduce our technology which supports our leading position of Japanese news curation service.

9. NTT Corporation

We conduct basic research in computer science and human science for creating innovative communication services. We show our recent works on machine translation, summarization, and discourse processing, presented at recent major conferences such as NAACL, ACL, and EMNLP.

Speaker's Guideline

Tutorial / Workshop

All speakers are asked to bring their own computers, and test it with the projector in advance. Few spare PCs are available at the Secretariat. Please ask our staff if you require them.

Usable cable is limited to VGA.

If you have trouble bringing your own laptop, or trouble with connection, please seek assistance from our staff at your venue.

All speakers must be in their session rooms at least 10 minutes before the start of the sessions.

Main Conference (Invited Talk, Oral Presentations)

A PC connected to the projector will be available on the podium.

Speakers are requested to have their presentation on a memory stick to use on the computer in the meeting room.
*The operating system on all computers at the conference will be Windows 8 with Office PowerPoint 2013.

Speakers may also use their own laptops. Mac users are asked to bring their own adaptor. Usable cable is limited to VGA.

Speakers using their own laptops are required to test it with the projector in advance.

All speakers must be in their session rooms at least 10 minutes before the start of the sessions.

Meetings rooms are equipped with a computer, screen, data projector, laser pointer, Wi-Fi and podium.

However, there are no sound or other audio visual equipment available in the meeting rooms.

Demo

Please set up your demo according to the Space Allocation posted in Room 1004-1007 10F.

You may set up your demo 30 minutes before the start of your session.

You are asked to clear out your space within 30 minutes after you finish your session.

Power is available at the venue, but PCs and monitors are not.

Poster

Please set up your poster according to the Space Allocation posted in the Foyer 12F.

You may put up your poster 10 minutes before the start of your session.

You are asked to take down your poster within 10 minutes after you finish your session.

Posters will be discarded by the Secretariat, if they are not taken down in time.

Thumbtacks (push pins) are available at the Foyer.

Change of Venue: Closing Ceremony

December 16, 17:45~18:30

Venue : 12F Conference Hall

*Please note the venue has been changed from Room 1001-1003